

Club Car®

CARRYALL

CARGO UTILITY VEHICLES



Things can get rocky out there. Team members come and go. Budgets fluctuate. Responsibilities expand. But the one-and-only Carryall remains a constant. It keeps on working, day in and day out: hauling cargo, transporting crews, saving time and money. And now it's more reliable and versatile than ever. By combining leading-edge innovations with traditional quality, the new Carryall is the one utility vehicle that can tackle 1,000 jobs. It stands alone.



1,000 JOBS. ONLY ONE
CARRYALL



JOB 110: MOVING MOUNTAINS

The Carryall 550 can move mountains of dirt, rock, or anything you throw into it. With more than a half-ton vehicle rated capacity, and an optional electric bed lift, this hero demonstrates its strength daily with a Mt. Everest attitude.



TANK-LIKE
DURABILITY.
TRUCK-LIKE PERFORMANCE.

Power right through your to-do list with the all new Carryall, whether you're maintaining your facilities or grounds, running security, hauling cargo, staging events, simplifying housekeeping or anything else.

We're so confident in the new Carryall line that we've expanded the warranty. The vehicles are now covered by an industry-leading 4-year battery, 3-year/3,000-hour powertrain, 2-year bumper-to-bumper limited warranty.

And a network of more than 600 Authorized Club Car Dealers deliver easy access to parts and factory-trained mechanics.





JOB 886: ALWAYS AN EARLY BIRD.

The Carryall 500 works as hard as you do. Scratch that. Harder. It's ready before you are, features a 14-hp Subaru engine with electronic fuel injection, and carries up to 1,200 lb (544 kg) of passengers and cargo. Yet it never needs a lunch break.

***DON'T JUST BUY A UTILITY VEHICLE. BUY
UNSURPASSED
RELIABILITY.***

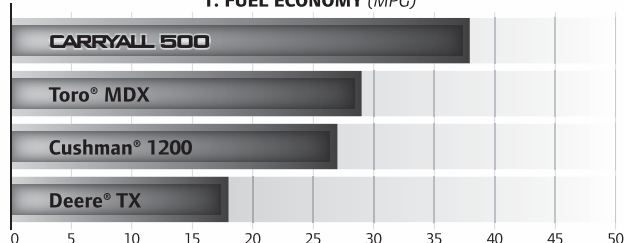
Carryall® utility vehicles are known for delivering years of trouble-free service.

The new vehicles continue that tradition. They retain the core components users prize in the Carryall brand: the rustproof, corrosion-resistant, aircraft-grade aluminum frame and body, self-compensating rack-and-pinion steering, independent front suspension system and unparalleled reliability. But they also incorporate innovative new features and benefits that add even more value.

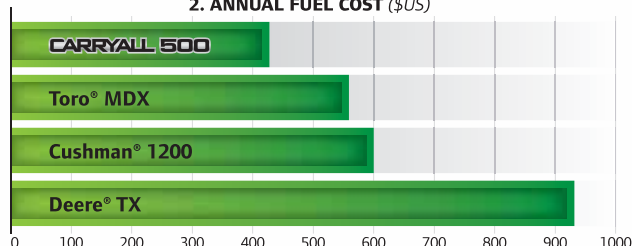
So you can upgrade your fleet while staying with the Carryall line you know and trust.

INDUSTRY-LEADING INNOVATIONS THAT TAKE THE WORK OUT OF WORK.

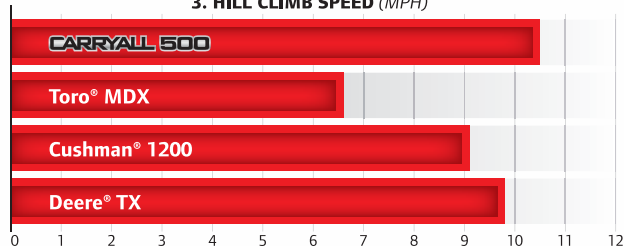
1. FUEL ECONOMY (MPG)



2. ANNUAL FUEL COST (\$US)



3. HILL CLIMB SPEED (MPH)



Boost Performance with an EFI Engine.

Gasoline-powered two-wheel drive Carryall® utility vehicles feature a 14-hp-rated, 404cc, Subaru single-cylinder overhead cam engine with electronic fuel injection (EFI), hemispherical heads, a case-hardened steel timing chain and a splash lubrication system that eliminates oil filters. The engines offer the following benefits over the former Carryall engines:

- Increase horsepower by 30%.
- Boost fuel efficiency by as much as 50%.
- Accelerate faster.
- Reduce emissions.
- Start right up, even in frigid weather.
- Improve reliability and longevity.
- Automatically compensate for altitude.
- Reduce maintenance cost.

Club Car is so confident in this new engine that the warranty has been increased from two years/2,000 hours to three years/3,000 hours limited warranty standard.

All performance testing was performed December 2013 by independent agency ATS, Marietta Georgia. For charts [1] and [2], vehicles were tested with driver plus cargo — 650 lb (294.8 kg) total weight — on rolling hills. Fuel cost were based on 5,000 miles per year, and fuel cost of \$3.50 per gallon. For chart [3], vehicles were tested with driver plus cargo 1200 lb (544.3 kg) on a 15-17% grade. Your results may vary.



Experience Fit-to-task Versatility and Unrivalled Ergonomics.

The new Carryall utility vehicles feature an industrial-strength bed, matchless versatility and automotive interiors.

- A** An automotive-style dash and ignition key with oversized dash pockets for storage, standard 12-volt powerport, and soft-grip steering wheel.
- B** Cockpit-like interior, more space between the driver and steering wheel, and contoured seating with high back bench seat.
- C** A rugged aluminum bed box featuring a Rhino™ lined floor for durability.
- D** A configurable, removable track-based attachment system for carrying tools and equipment.
- E** Optional adjustable bed dividers and tie-downs that stabilize cargo.
- F** A single-handed latch-and-release tailgate that runs across the back of the cargo box and can be opened from either side or the center.



Improve Productivity with The Industry's Widest Range of Commercial Accessories. When designing the new Carryall® utility vehicles, we did not bolt on existing accessories. Instead we designed the vehicle and accessories to integrate with each other. These include:

- LED headlights that last 50 times longer than traditional lights.
- An optional cab integrated into the vehicle's design, so it doesn't look "bolted on." Its doors and windshield sit flush with the frame, keeping wind and rain out.
- Ladder racks, tool boxes, van boxes, stake sides, dump kits and more.
- Cabs, enclosures, heaters, fans and other equipment that can turn your vehicles into year-round assets.



Reduce Expensive "User Errors" with Efficient, Onboard Chargers. Most new electric Carryall® utility vehicles come standard with an industry exclusive onboard, high-efficiency charger with cord retractor. The chargers:

- Work globally, and continue charging even during voltage swings.
- Are 92-95% efficient, a 10% increase over the former charger.
- Are charged through a plug conveniently located on the front of the car.
- Can be charged at any 110- or 240-volt outlet.
- Issue an audible alert when charging begins.
- Can be programmed with algorithms for lead acid or gel/AGM batteries.





CARRYALL 100

Entry-level Pricing. Full-sized Performance. The sturdy but affordable Carryall 100 is a great choice for security, parking and lighter duties. Available in gas with a class-leading EFI engine or electric with a high-efficiency charger, and it fits into the back of a pick-up truck.

DRIVING SURFACE				
IMPROVED				ALL
VEHICLE CAPACITY				
EMPTY	1/4	1/2	3/4	1 TON
TOWING CAPACITY				
EMPTY	1/4	1/2	3/4	1 TON



JOB 995: AN ECONOMICAL WAY TO RUN SECURITY.

The Carryall 100 is our most economical model. Its small profile makes it suitable for security detail in congested areas such as parking garages and its large tires help in climbing curbs or traversing rough terrain.



DRIVING SURFACE				
IMPROVED				ALL
VEHICLE CAPACITY				
EMPTY	1/4	1/2	3/4	1 TON
TOWING CAPACITY				
EMPTY	1/4	1/2	3/4	1 TON

CARRYALL 300

When Bigger is Better! Need a heavier duty vehicle? Consider the Carryall 300. Available in gas or electric, this two-wheel drive vehicle features heavy-duty rustproof aluminum bodies and beds built to withstand even harsh industrial conditions.



JOB 9: WIELD THE WELDER.

(Above) The Carryall 300 has the strength and dependability of a quality, seamless weld. Consider an optional receiver hitch for towing on job sites.

JOB 228: PAINTING, SIMPLIFIED.

The Carryall 300's unique bed box features a configurable track-based attachment system with optional ladder racks and other inventive accessories. This frees room in the bed for other supplies and protects your valuable assets.



DRIVING SURFACE				
IMPROVED				ALL
VEHICLE CAPACITY				
EMPTY	1/4	1/2	3/4	1 TON
TOWING CAPACITY				
EMPTY	1/4	1/2	3/4	1 TON

CARRYALL 500

A-Jack-Of-All-Trades. Need to tote more weight? The Carryall 500 offers a total vehicle capacity of up to 1,200 lb. (544 kg). That, and its unique fit-to-task bed box design, make it ideal for a range of duties around your site.

JOB 743: RESORT LIVING.

(Above) Resort to the Carryall 500 for the best all-around work truck. Whether it's working the docks or performing maintenance around the property, you can count on it to take care of all your needs.

JOB 335: GROUNDS MAVERICK.

(Right) The Carryall 500 can tow and haul a combined 3/4 ton load safely. That's enough capacity to tow landscape materials and the tools necessary to make short work of your grounds maintenance.





CARRYALL 550

More Ground Clearance. Tough enough to trounce rough terrain with its' all-terrain tires and increased ground clearance. Like all Carryalls, it features a cockpit-like interior that makes the vehicle easy to enter and exit.

DRIVING SURFACE				
IMPROVED				ALL
VEHICLE CAPACITY				
EMPTY	1/4	1/2	3/4	1 TON
TOWING CAPACITY				
EMPTY	1/4	1/2	3/4	1 TON



JOB 491: PUTTING OUT FIRES.

Thanks to its unmatched versatility and strength, the Carryall 550 can be used in many applications at construction and industrial sites. From down-and-dirty jobs that require heavy lifting to serving the fire brigade, it commands respect.



DRIVING SURFACE				
IMPROVED				ALL
VEHICLE CAPACITY				
EMPTY	1/4	1/2	3/4	1 TON
TOWING CAPACITY				
EMPTY	1/4	1/2	3/4	1 TON

CARRYALL 700

A Heavy Hauler. Combining a long bed with a $\frac{3}{4}$ ton (680 kg) total vehicle capacity, the Carryall 700 is your go-to vehicle for large bulky loads. Engineered with Club Car's renowned independent front suspension and rack-and-pinion steering, it reduces vibrations and delivers a smooth ride, even when fully loaded.

JOB 611: HEAVY LIFTER.

(Above) With a whopping $\frac{1}{2}$ ton capacity bed that's nearly six feet (179 cm) long, the Carryall 700 will win your fleet's Iron Man contest hands down. And, with best-in-class ground clearance and turning radius, it navigates rough terrain and tight spaces with ease.

JOB 775: GROUNDS CLEARANCE.

(Right) The Carryall 700 with optional stake-side kit is a great way to add functionality. Use the flat bed to haul oversized items, or quickly attach the stake-sides to carry the unsightly.





DRIVING SURFACE				
IMPROVED				ALL
VEHICLE CAPACITY				
EMPTY	1/4	1/2	3/4	1 TON
TOWING CAPACITY				
EMPTY	1/4	1/2	3/4	1 TON

CARRYALL 1500^{2WD}

More For Less. The Carryall 1500 with two-wheel drive delivers the power, and ground clearance of a four-wheel drive vehicle with even more payload. It tows 1900 lb. (862 kg) with its 3/4-ton option and features 4-wheel disc brakes and a 20.1 hp (15.0 kW) Kawasaki gasoline engine.



JOB 939: GENTLE GIANT.

Need a heavy-duty, yet turf-friendly vehicle? Depend on the Carryall 1500 2WD. Its large turf tires tread lightly, but its optional 3/4-ton (680.4 kg) payload capacity gives it the strength to do more.



DRIVING SURFACE				
IMPROVED				ALL
VEHICLE CAPACITY				
EMPTY	1/4	1/2	3/4	1 TON
TOWING CAPACITY				
EMPTY	1/4	1/2	3/4	1 TON

CARRYALL 1500^{4WD}

Foolproof Four-wheel Drive. The Carryall 1500 features Club Car's exclusive IntelliTrak™ all-wheel-drive system that senses the ground it's on and shifts automatically. Available with a 20.1 hp-rated (15.0 kW) Kawasaki gasoline or 20 hp-rated (15.0 kW) Kubota Diesel engine, this heavy-duty vehicle gets down and dirty.

Want more versatility? The Carryall 1500 IntelliTach™ combines the rugged Carryall 1500 with an innovative hydraulic quick-attachment tool system and six task-oriented implements.

JOB 107: SERIOUS SECURITY.

With its heavy-duty chassis, 8.2 in. (20.8 cm) of rear axle clearance and a top speed of 25 mph (40.2 km/h), the Carryall 1500 with 4-wheel drive is easily seen, ideal for driving over large obstacles, and can quickly cover a lot of ground.





DRIVING SURFACE				
IMPROVED				ALL
VEHICLE CAPACITY				
EMPTY	1/4	1/2	3/4	1 TON
TOWING CAPACITY				
EMPTY	1/4	1/2	3/4	1 TON

CARRYALL 1700 4WD

A Four-passenger 4x4 With a Full-sized Bed. The Carryall 1700 SE builds on the features of the Carryall 1500 by adding two additional forward-facing seats without sacrificing cargo capacity. With room for four passengers and 800 pounds of cargo, it lets your crew get the job done in one trip.



JOB 322: SAVING LIVES.

(Above) Consider the Carryall 1700 Ambulance with 4-wheel drive for unstoppable power and the space to carry all of your lifesaving gear. Engage our Custom Solutions department so you can outfit one exactly the way you want it.

JOB 751: A HELPING HAND.

(Left) You'll love the Carryall 1700 with 4-wheel drive and Intellitach™ quick attachment system. Save time and money with an all-in-one utility vehicle, plow, forklift, and bucket loader solution.

WE GIVE YOU LOTS OF
OPTIONS
AND ACCESSORIES.

Your Vehicle, Your Way. Check out our portfolio of accessories including the *all new*, configurable and removable track-based bed attachment system for carrying tools and equipment. And, if accessories alone won't do the trick, our Custom Solutions Department will create a unique vehicle just for your application.





Ratcheting Tool Holder Kit (Upper)
Standard Tool Holder Kit (Lower)



Backpack Blower Rack (Right)



Multi-Tool Holder Kit



Bed-Mounted Ladder Rack Kit



Bucket Holder Kit



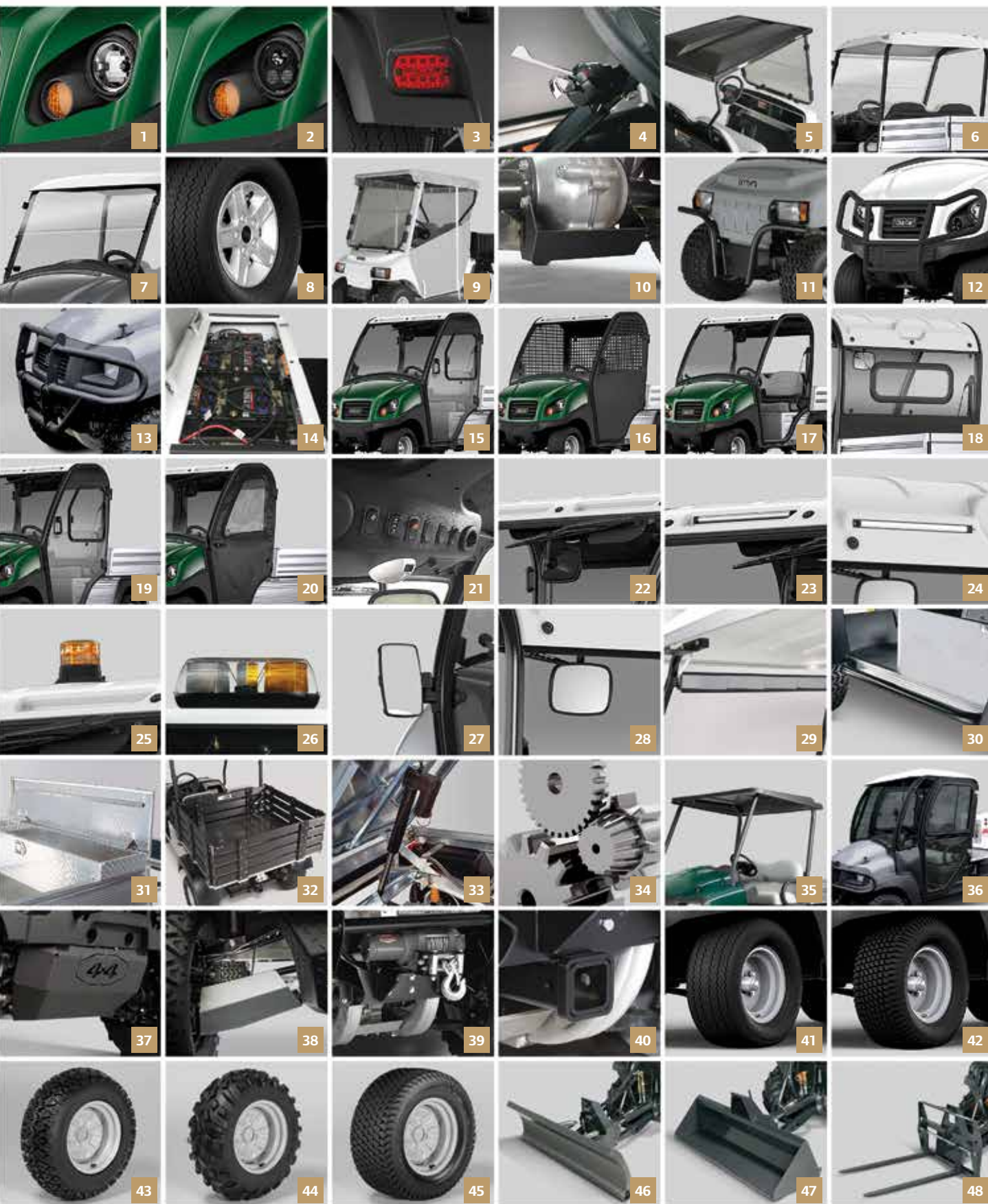
Bed Divider Kit
Short Bed Divider Kit

WE GIVE YOU LOTS OF OPTIONS AND ACCESSORIES.

ACCESSORY		CARRYALL															
		100		300		500		550		700		1500	1500		1500	1700	
		ELECTRIC	GAS	ELECTRIC	GAS	ELECTRIC	GAS	ELECTRIC	GAS	ELECTRIC	GAS	2WD GAS	4WD		Intellitach DIESEL	4WD	
1	Headlights	S	S	S	S	S	S	S	S	S	S	S	S	S	S	S	S
2	LED Upgrade	-	-	O	O	O	O	O	O	O	O						
3	Headlights/Taillights/Horn	O	O	O,P	O,P	O,P	O,P	O,P	O,P	O,P	O,P	O	O	O	O	O	O
4	Headlights/Taillights/Horn/Turn Signal	O	O	O	O	O	O	O	O	O	O	O	O	O	O	O	O
5	Canopy Top	O	O	-	-	-	-	-	-	-	-	-	-	-	-	-	-
6	Canopy Top	-	-	O	O	O	O	O	O	O	O	-	-	-	-	-	-
7	Fold-Down Windshield	O	O	O	O	O	O	O	O	O	O	-	-	-	-	-	-
8	5-Spoke Silver Wheel Covers	-	-	O	O	O	O	O	O	O	O	-	-	-	-	-	-
9	Soft Enclosure — Gray Vinyl	O	O	-	-	-	-	-	-	-	-	-	-	-	-	-	-
10	Differential Guard	O	O	O,P	O,P	O,P	O,P	O,P	O,P	O,P	O,P	O	O	O	O	O	O
11	Brush Guard — Carryall 100	O	O	-	-	-	-	-	-	-	-	-	-	-	-	-	-
12	Heavy Duty Brush Guard	-	-	O,P	O,P	O,P	O,P	O,P	O,P	O,P	O,P	-	-	-	-	-	-
13	Heavy Duty Brush Guard			-	-	-	-	-	-	-	-	O	O	O	O	O	O
14	Single Point Watering System	O	-	O	-	O	-	O	-	O	-	-	-	-	-	-	-
15	Complete Cab (ROPS)	-	-	O	O	O	O	O	O	O	O	-	-	-	-	-	-
16	Range Cab (ROPS)			O	O	O	O	O	O	O	O						
17	Basic Cab (ROPS)			O	O	O	O	O	O	O	O						
18	Rear Sliding Window	-	-	O	O	O	O	O	O	O	O	-	-	-	-	-	-
19	Glass Doors W/Driver Window	-	-	O	O	O	O	O	O	O	O	-	-	-	-	-	-
20	Soft Doors	-	-	O	O	O	O	O	O	O	O	-	-	-	-	-	-
21	Overhead Console/Fan/Dome Light	-	-	O	O	O	O	O	O	O	O	-	-	-	-	-	-
22	Front Wiper	-	-	O	O	O	O	O	O	O	O	-	-	-	-	-	-
23	Front LED Work Lights	-	-	O	O	O	O	O	O	O	O	-	-	-	-	-	-
24	Rear LED Work Lights	-	-	O	O	O	O	O	O	O	O	-	-	-	-	-	-
25	Strobe Light	-	-	O	O	O	O	O	O	O	O	-	-	-	-	-	-
26	Security Light Bar	-	-	O	O	O	O	O	O	O	O	-	-	-	-	-	-
27	Side Mirrors	-	-	O	O	O	O	O	O	O	O	-	-	-	-	-	-
28	Cab Rear View Mirror	-	-	O	O	O	O	O	O	O	O	-	-	-	-	-	-
29	Rearview Wink Mirror	O	O	O	O	O	O	O	O	O	O	O	O	O	O	O	O
30	Nerf Bars	O	O	-	-	-	-	-	-	-	-	O	O	O	O	O	O
31	Tool Box- Aluminum Locking	-	-	O	O	O	O	O	O	O	O	O	O	O	O	O	O
32	Stake-Side Kit	-	-	O	O	O	O	O	O	O	O	O	O	O	O	O	O
33	Electric Bed Lift	-	-	O	O	O	O	O	O	O	O	O	O	O	O	O	O
34	Limited Slip Differential	-	O	-	O	-	O	-	O	-	O	-	-	-	-	-	-
35	Canopy Top	-	-	-	-	-	-	-	-	-	-	O	O	O	O	O	O
36	AWD Cab	-	-	-	-	-	-	-	-	-	-	O	O	O	O	-	-
37	Front Skid Plate	-	-	-	-	-	-	-	-	-	-	O	O	O	O	O	O
38	CV Boot Guards, Metal	-	-	-	-	-	-	-	-	-	-	-	O	O	O	O	O
39	2500 Lb Winch	-	-	-	-	-	-	-	-	-	-	O	O	O	O	O	O
40	2 in Front Receiver	-	-	-	-	-	-	-	-	-	-	O	O	O	O	O	O
41	Premium Tires	-	-	O,P	O,P	O,P	O,P	-	-	O,P	O,P	-	-	-	-	-	-
42	Extra Traction Tires	-	-	O,P	O,P	O,P	O,P	-	-	O,P	O,P	-	-	-	-	-	-
43	All Terrain Tires	S	S	-	-	-	-	S	S	-	-	O	S	S	S	S	S
44	Mud Tires	-	-	-	-	-	-	-	-	-	-	O	O	O	O	O	O
45	Turf/Street Tires	-	-	-	-	-	-	-	-	-	-	S	-	-	-	-	-
46	Intellitach™ Plow Blade	-	-	-	-	-	-	-	-	-	-	-	-	-	O	-	-
47	Intellitach™ Front Bucket	-	-	-	-	-	-	-	-	-	-	-	-	-	S	-	-
48	Intellitach™ Pallet Forks	-	-	-	-	-	-	-	-	-	-	-	-	-	O	-	-
49	Bed Mat (Not Shown)	-	-	-	-	-	-	-	-	-	-	O	O	O	O	O	O
50	Standard Colors	S	S	S	S	S	S	S	S	S	S	Grey/Green	Grey/Green	Grey/Green	Grey/Green	Grey/Green	Grey/Green
51	Premium Colors	O	O	O	O	O	O	O	O	O	O	O	O	O	O	O	O

(S) Standard Equipment (O) Optional Equipment (P) Premium Package (-) Not Available

Not all accessories available in all markets. Check with your local Club Car representative for details and availability.



Dark Grey White Dark Green Bright Blue 50

Titanium Silver Red Black 51



CHECK OUT THESE SPECIFICATIONS BEFORE YOU KICK THE TIRES.



	CARRYALL 100		CARRYALL 300	
	ELECTRIC	GASOLINE	ELECTRIC	GASOLINE
Engine**/Motor Type	48-volt DC	Subaru, 4-cycle	48-volt DC	Subaru, 4-cycle
Controller	250 Amp - Solid State		250 Amp - Solid State	
Displacement		404 cc		404 cc
Cylinders		Single		Single
Valving		Overhead Cam		Overhead Cam
Cooling		Air Cooled		Air Cooled
Horsepower (Rated)	3.3 hp (2.4 kW) rated, 13 hp (9.6 kW) peak	14.0 hp (10.3 kW) rated @ 3600 RPM per SAE J1940	3.3 hp (2.4 kW) rated, Peak 13 hp (9.6 kW)	14.0 hp (10.3 kW) rated @ 3600 RPM per SAE J1940
Max Torque	34.5 ft-lb (46.7 N-m) rated @ 1980 rpm	19.91 ft lb (27.0 N-m) rated @ 2400 RPM	34.5 ft-lb (46.7 N-m) rated @ 1980 rpm	19.91 ft lb (27.0 N-m) rated @ 2400 RPM
Lubrication		Splash lubrication		Splash lubrication
Governor		Ground Speed		Ground Speed
Transmission	Direct drive, double reduction helical gear	Continuously Variable Transmission (CVT)	Direct drive, double reduction helical gear	Continuously Variable Transmission (CVT)
Gear Selection	Forward/Neutral/Reverse		Forward/Neutral/Reverse	
Gear Ratio	12.32:1	11.47:1 forward;15.63:1 reverse	12.32:1	11.47:1 forward;15.63:1 reverse
Ignition		Electronic		Electronic
Battery	Six 8-volt Flooded Lead Acid	12V 500 CCA 105 min Reserve	Six 8-volt Flooded Lead Acid	12-volt 500 CCA 105 min Reserve
Charger	ERIC (650 W High Frequency)		ERIC (650 W High Frequency)	
Headlights	Headlights standard		Two 37.5 Watt Halogen	
Fuel Delivery System		Electronic Fuel Injection (EFI)		Electronic Fuel Injection (EFI)
Capacity		7 gal (26 L)		4.6 gal (17.4 L)
Steering Mechanism	Self-adjusting Rack and Pinion		Self-adjusting Rack and Pinion	
Suspension (Front)	Independent leaf spring with dual hydraulic shocks		Independent leaf spring with dual hydraulic shocks	
Suspension (Rear)	Semi-independent leaf spring with dual hydraulic shocks		Semi-independent leaf spring with dual hydraulic shocks	
Brakes	Rear-wheel, mechanical drum		Rear Mechanical Drum	
Park Brake	Foot Operated, Multi-lock		Foot Operated, Multi-lock	
Body (Front & Finish)	ABS with automotive paint		ArmorFlex with automotive paint/clearcoat	
Body (Frame & Rear)	Aluminum / ArmorFlex®		Aluminum	
Tires (Front)	20 x 10-8, 4-ply rated, All-trail II		20 x 10-10, 6-ply	
Tires (Rear)	20 x 10-8, 4-ply rated, All-trail II		20 x 10-10, 6-ply	
Wheelbase	65 in (165.1 cm)		65.5 in (166.3 cm)	
Overall Height	48 in (121.9 cm)		47.1 in (119.6 cm)	
Overall Length	101 in (257 cm)		118 in (299.7cm)	
Bed L x W x H (Cargo Box)	27.5 x 43.5 x 11 in (65.3 x 110.5 x 27.9 cm)		36.2 x 47.5 x 10.5 in (91.9 x 120.6 x 26.6 cm)	
Ground Clearance (Differential)	5.5 in (14 cm)		5.6 in (14.2 cm)	5.2 in (13.2 cm)
Track Width (Front)	34.5 in (88 cm)		36.6 in (92.9 cm)	
Track Width (Rear)	38.5 in (98 cm)		39.5 in (100.3 cm)	
Max Width (w/o Mirrors)	45 in (114.3 cm)		50.3 in (127.7cm)	
Curb Weight (with Batteries)	980 lb (444.5 kg)	863 lb (391.5 kg)	1105 lb (501.2 kg)	817 lb (370. 5 kg)
Total Vehicle Capacity	800 lb (363.2 kg)		800 lb (362.8 kg)	
Bed Load Capacity	300 lb (136.1 kg)		300 lb (136.0 kg)	
Towing Capacity	300 (136.1 kg)		800 lb (362.8 kg)	
Combined Gross Vehicle Capacity	800 lb (363 kg)		800 lb (362.8 kg)	
Speed	15-17 mph (24-27 km/h)		15-17 mph (24-27 km/h)	
Warranty	4 yr limited battery warranty; 2-year limited consumer; 1-year limited commercial	3 yr/3000 hr limited powertrain; 2-year limited consumer; 1-year limited commercial	4 yr limited battery warranty 3 yr limited powertrain/frame 2 yr limited remaining vehicle	3 yr/3000 hr limited powertrain/frame 2 yr limited remaining vehicle

** Engine horsepower and torque specifications are provided by the engine manufacturer. Actual horsepower and torque in use may differ and are dependent on environmental conditions as well as maintenance condition of the engine.



CARRYALL 500

ELECTRIC	GASOLINE
48-volt DC 500 Amp - Solid State	Subaru, 4-cycle 404 cc Single Overhead Cam Air Cooled
3.7 hp (2.7kW) rated, Peak 20 hp (14.9 kW)	14.0 hp (10.3 kW) rated @ 3600 RPM per SAE J1940
71 ft-lb (96.2 N-m) rated @ 1450 RPM	19.91 ft lb (27.0 N-m) rated @ 2400 RPM Splash lubrication Ground Speed
Direct drive, double reduction helical gear	Continuously Variable Transmission (CVT)
Forward/Neutral/Reverse	
12.32:1	11.47:1 forward;15.63:1 reverse Electronic
Eight 6-volt Flooded Lead Acid DeltaQ QuiQ (1 kW High Frequency)	12-volt 500 CCA 105 min Reserve
Two 37.5 Watt Halogen	
	Electronic Fuel Injection (EFI) 4.6 gal (17.4 L)
Self-adjusting Rack and Pinion Independent leaf spring with dual hydraulic shocks Semi-independent leaf spring with dual hydraulic shocks 4-wheel Mechanical Drum Foot Operated, Multi-lock ArmorFlex with automotive paint/clearcoat Aluminum 20 x 10-10, 6-ply 20 x 10-10, 6-ply 78.1 in (198.3 cm) 47.1 in (119.6 cm) 118 in (299.7cm) 44.2 x 47.5 x 10.5 in (112.2 x 120.6 x 26.6 cm)	
5.6 in (14.2 cm)	5.2 in (13.2 cm)
	36.6 in (92.9 cm) 39.5 in (100.3 cm) 50.3 in (127.7cm)
1393 lb (631.8 kg)	907 lb (411.4 kg)
	1200 lb (544.3 kg) 800 lb (362.8 kg) 1200 lb (544.3 kg) 1500 lb (680.3 kg)
	15-17 mph (24-27 km/h)
4 yr limited battery warranty 3 yr limited powertrain/frame 2 yr limited remaining vehicle	3 yr/3000 hr limited powertrain/frame 2 yr limited remaining vehicle

CARRYALL 550

ELECTRIC	GASOLINE
48-volt DC 500 Amp - Solid State	Subaru, 4-cycle 404 cc Single Overhead Cam Air Cooled
3.7 hp (2.7kW) rated,Peak 20 hp (14.9 kW)	14.0 hp (10.3 kW) rated @ 3600 RPM per SAE J1940
71 ft-lb (96.2 N-m) rated@ 1450 RPM	19.91 ft lb (27.0 N-m) rated @ 2400 RPM Splash lubrication Ground Speed
Direct drive, double reduction helical gear	Continuously Variable Transmission (CVT)
Forward/Neutral/Reverse	
12.32:1	11.47:1 forward;15.63:1 reverse Electronic
Eight 6-volt Flooded Lead Acid DeltaQ QuiQ (1 kW High Frequency)	12-volt 500 CCA 105 min Reserve
Two 37.5 Watt Halogen	
	Electronic Fuel Injection (EFI) 4.6 gal (17.4 L)
Self-adjusting Rack and Pinion Independent leaf spring with dual hydraulic shocks Semi-independent leaf spring with dual hydraulic shocks 4-wheel Mechanical Drum Foot Operated, Multi-lock ArmorFlex with automotive paint/clearcoat Aluminum 22 x 10-10, 4-ply Turf tread, 22 x 10-10, 6-ply heavy-duty all-terrain 23 x 10-10, 4-ply Turf tread, 22 x 10-10, 6-ply heavy-duty all-terrain 78.1 in (198.3 cm) 51.2 in (130.0 cm) 118 in (299.7cm) 44.2 x 47.5 x 10.5 in (112.2 x 120.6 x 26.6 cm)	
	6 in (15.2 cm) 36.6 in (92.9 cm) 39.5 in (100.3 cm) 50.3 in (127.7cm)
1402 lb (635.9 kg)	942 (427.2 kg)
	900 lb (408.2 kg) 500 lb (226.7 kg) 900 lb (408.2 kg) 900 lb (408.2 kg)
	15-17 mph (24-27 km/h)
4 yr limited battery warranty 3 yr limited powertrain/frame 2 yr limited remaining vehicle	3 yr/3000 hr limited powertrain/frame 2 yr limited remaining vehicle

CHECK OUT THESE SPECIFICATIONS BEFORE YOU KICK THE TIRES.



	CARRYALL 700		CARRYALL 700 4x4	
	ELECTRIC	GASOLINE	GASOLINE 4X2	GASOLINE 4X4
Engine**/Motor Type	48-volt DC	Subaru, 4-cycle	Kawasaki 4-cycle, industrial grade	
Controller	500 Amp - Solid State			
Displacement		404 cc	675 cc	
Cylinders		Single	Twin-cylinder	
Valving		Overhead Cam	OHV	
Cooling		Air Cooled	Air Cooled	
Horsepower (Rated)	3.7 hp (2.7kW) rated, Peak 20 hp (14.9 kW)	14.0 hp (10.3 kW) rated @ 3600 RPM per SAE J1940	20.1 hp (15.0 kW) rated @ 3400 RPM per SAE J1349	
Max Torque	71 ft-lb (96.2 N-m) rated @ 1450 RPM	19.91 ft lb (27.0 N-m) rated @ 2400 RPM	36.5 ft/lb (49.5 Nm)	
Lubrication		Splash lubrication	Full-pressure, spin-on oil filter	
Governor		Ground Speed	Automatic ground speed sensing	
Transmission	Direct drive, double reduction helical gear	Continuously Variable Transmission (CVT)	Wide ratio CVT; 3.7:1 low, 0.59:1 high	
Front/Rear Differential			Automatic locking rear differential	IntelliTrak™ Automatic 4-wheel Drive
Gear Selection	Forward/Neutral/Reverse		Forward/Neutral/Reverse	
Gear Ratio	12.32:1	11.47:1 forward;15.63:1 reverse	5.39:1 forward, 7.79:1 reverse, 3.3:1 differential	
Ignition		Electronic	Transistorized magneto	
Battery	Eight 6-volt Flooded Lead Acid	12-volt 500 CCA 105 min Reserve	12-volt 500 CCA 105 min Reserve	
Charger	DeltaQ QuiQ (1 kW High Frequency)			
Headlights	Two 37.5 Watt Halogen		Headlights standard	
Fuel Delivery System		Electronic Fuel Injection (EFI)	Carburetor	
Fuel Capacity		4.6 gal (17.4 L)	6.5 gal (24.6 L)	
Steering Mechanism	Self-adjusting Rack and Pinion		Rack and pinion with Tilt Steering	
Suspension (Front)	Independent leaf spring with dual hydraulic shocks		Independent double A-arms with coil-over shocks	
Suspension (Rear)	Semi-independent leaf spring with dual hydraulic shocks		Semi-independent 4-link solid axle	
Brakes	4-wheel Mechanical Drum		4-wheel, hydraulic disc	
Park Brake	Foot Operated, Multi-lock		Automotive style	
Body (Front & Finish)	ArmorFlex with automotive paint/clearcoat		GE Geloy high-impact, scratch-resistant, injection molded color, Automotive finish	
Body (Frame and Rear)	Aluminum		Tubular aluminum	
Tires (Front)	20 x 10-10, 6-ply		4-ply Turf; 23 x 10.5 x 12	All-terrain, 25 x 10.5-12, 4-ply
Tires (Rear)	20 x 10-10, 6-ply		4-ply Turf; 24 x 10.5 .x 12	All-terrain, 25 x 10.5-12, 4-ply
Wheelbase	99.1 in (251.7 cm)		88.7 in (225.3 cm)	
Overall Height	47.1 in (119.6 cm)		52.6 in (133.5 cm)	78.6 in (199.6 cm)
Overall Length	137.5 in (349.3 cm)		124.6 in (316.5 cm)	
Bed L x W x H (Cargo Box)	65.5 x 47.5 x 10.5 in (166.3 x 120.6 x 26.6cm)		48.8 x 49.8 x 10.9 in (124 x 126.5 x 27.7 cm)	
Ground Clearance (Differential)	5.6 in (14.2 cm)	5.2 in (13.2 cm)	7.3 in (18.5 cm)	8.2 in (20.8 cm)
Track Width (Front)	36.6 in (92.9 cm)		48.8 in. (124 cm)	
Track Width (Rear)	39.5 in (100.3 cm)		48.8 in. (124 cm)	
Max Width (w/o Mirrors)	50.3 in (127.7cm)		58.5 in. (148.5 cm)	
Curb Weight (with Batteries)	1475 lb (669 kg)	913 lb (414 kg)	1410 lb (639.57 kg)	1430 lb (648.6 kg)
Total Vehicle Capacity	1500 lb (680.3 kg)		1450 lb (658 kg)/1900 lb (862 kg)*	1200 lb (544 kg)/1450 lb (658 kg)**
Bed Load Capacity	1000 lb (453.5 kg)		1050 lb (476.3 kg)/1500 lb (680.3 kg)*	800 lb (363.2 kg)/1050 lb (658 kg)**
Towing Capacity	1500 lb (680.3 kg)		1450 lb (658 kg)/1900 lb (862 kg)*	1200 lb (544 kg)/1450 lb (658 kg)**
Combined Gross Vehicle Capacity	1500 lb (680.3 kg)		1450 lb (658 kg)/1900 lb (862 kg)*	1200 lb (544 kg)/1450 lb (658 kg)**
Speed	15-17 mph (24-27 km/h)		19 mph (30.6 km/h)	25 mph (40.2 km/h)
Warranty	4 yr limited battery warranty 3 yr limited powertrain/frame 2 yr limited remaining vehicle	3 yr/3000 hr limited powertrain/frame 2 yr limited remaining vehicle	2-year/2,000 hour limited	

*3/4-ton option; ** High-capacity option



CARRYALL 1500		CARRYALL 1700	
DIESEL 4X4	DIESEL 4X4 WITH INTELLITACH	GASOLINE 4X4	DIESEL 4X4
Kubota D722, industrial grade		Kawasaki 4-cycle, industrial grade	
719 cc		675 cc	
3-cylinder		Twin-cylinder	
OHV		OHV	
Liquid-cooled		Air Cooled	
20.0 hp (15.0 kW) rated @ 3600 RPM per SAE J1995		20.1 hp (15.0 kW) rated @ 3400 RPM per SAE J1349	
33 ft/lb (45 Nm)		36.5 ft/lb (49.5 Nm)	
Full-pressure, spin-on oil filter		Full-pressure, spin-on oil filter	
Automatic ground speed sensing		Automatic ground speed sensing	
Wide ratio CVT; 3.7:1 low, 0.59:1 high		Wide ratio CVT; 3.7:1 low, 0.59:1 high	
IntelliTrak™ Automatic 4-wheel Drive		IntelliTrak™ Automatic 4-wheel Drive	
Forward/Neutral/Reverse		Forward/Neutral/Reverse	
5.39:1 forward, 7.79:1 reverse, 3.3:1 differential		5.39:1 forward, 7.79:1 reverse, 3.3:1 differential	
Compression	Compression	Transistorized magneto	Compression
12-volt 500 CCA 105 min Reserve		12-volt 500 CCA 105 min Reserve	
Headlights standard		Headlights standard	
Mechanical injection		Carburetor	Mechanical injection
6.5 gal (24.6 L)		6.5 gal (24.6 L)	
Self-adjusting Rack and Pinion		Self-adjusting Rack and Pinion	
Independent leaf spring with dual hydraulic shocks		Independent leaf spring with dual hydraulic shocks	
Independent leaf spring with dual hydraulic shocks		Independent leaf spring with dual hydraulic shocks	
4-wheel, hydraulic disc		4-wheel, hydraulic disc	
Automotive style		Automotive style	
GE Geloy high-impact, scratch-resistant, injection molded color, Automotive finish		GE Geloy high-impact, scratch-resistant, injection molded color, Automotive finish	
Tubular aluminum		Tubular aluminum	
All-terrain, 25 x 10.5-12, 4-ply		All-terrain, 25 x 10.5-12, 4-ply	
All-terrain, 25 x 10.5-12, 4-ply		All-terrain, 25 x 10.5-12, 4-ply	
88.7 in (225.3 cm)		114 in (225.3 cm)	
78.6 in (199.6 cm)		78.6 in (199.6 cm)	
124.6 in (316.5 cm)	148.6 in (377.4 cm)	157.6 in (400.3 cm)	
48.8 x 49.8 x 10.9 in (124 x 126.5 x 27.7 cm)		48.8 x 49.8 x 10.9 in (124 x 126.5 x 27.7 cm)	
8.2 in (20.8 cm)		8.2 in (20.8 cm)	
48.8 in. (124 cm)		48.8 in. (124 cm)	
48.8 in. (124 cm)		48.8 in. (124 cm)	
58.5 in. (148.5 cm)		58.5 in. (148.5 cm)	
1550 lb (703.1 kg)	1710 lb (775.64 kg)	1630 lb (739.36 kg)	1750 lb (793.8 kg)
1200 lb (544 kg)/1450 lb (658 kg)**	1700 lb (771.1 kg)	1600 lb (725.8 kg)	
800 lb (363.2 kg)/1050 lb (658 kg)**	800 lb (363.2 kg)	800 lb (363.2 kg)	
1200 lb (544 kg)/1450 lb (658 kg)**	1700 lb (771.1 kg)	1600 lb (725.8 kg)	
1200 lb (544 kg)/1450 lb (658 kg)**	1700 lb (771.1 kg)	1600 lb (725.8 kg)	
25 mph (40.2 km/h)		25 mph (40.2 km/h)	
2-year/2,000 hour limited	2-year/2,000 hour limited	2-year/2,000 hour limited	2-year/2,000 hour limited



Ingersoll Rand (NYSE:IR) advances the quality of life by creating comfortable, sustainable and efficient environments. Our people and our family of brands—including Club Car[®], Ingersoll Rand[®], Thermo King[®] and Trane[®]—work together to enhance the quality and comfort of air in homes and buildings; transport and protect food and perishables; and increase industrial productivity and efficiency. We are a global business committed to a world of sustainable progress and enduring results.



Visit our website!



It's good to be green!

Club Car, LLC
PO Box 204658
Augusta, GA 30917
USA

1.800.ClubCar
info@clubcar.com

Club Car
Ingersoll Rand
Alma Court Building
Lenneke Marelaan,6
BE-1932 Sint-Stevens-Woluwe
Belgium

+32 2 746 1200
info.eu@clubcar.com

ingersollrand.com